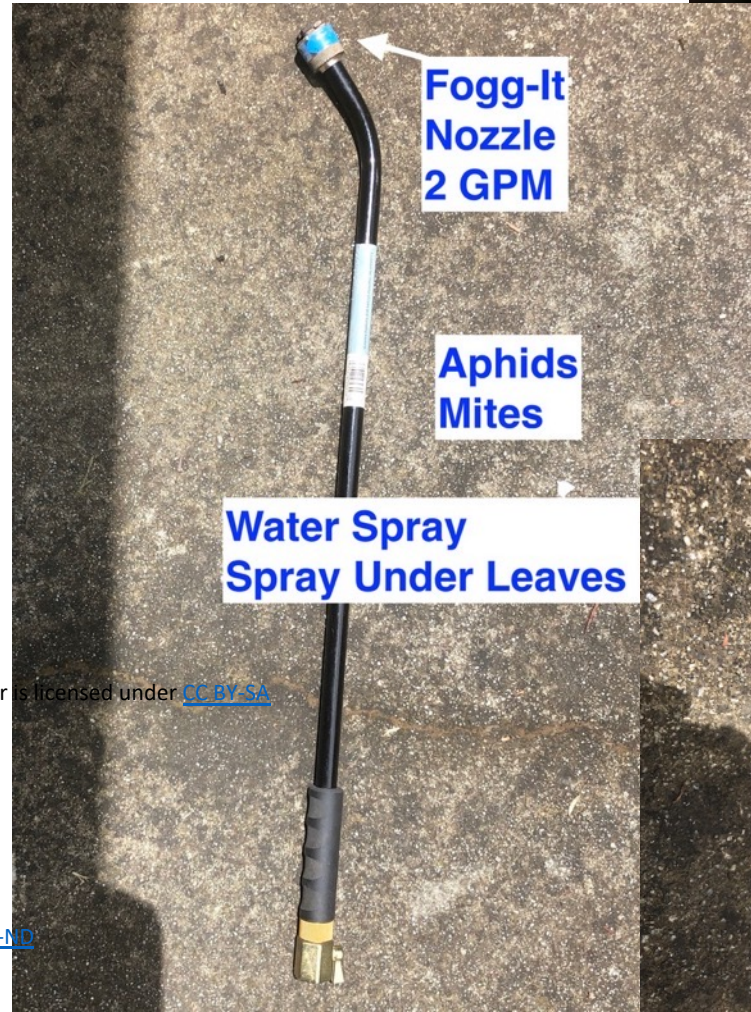




PENINSULA
ROSE SOCIETY

Rose Pests & Diseases

Water Spray for Aphids, Mites & Natural Predators



Fungal Diseases



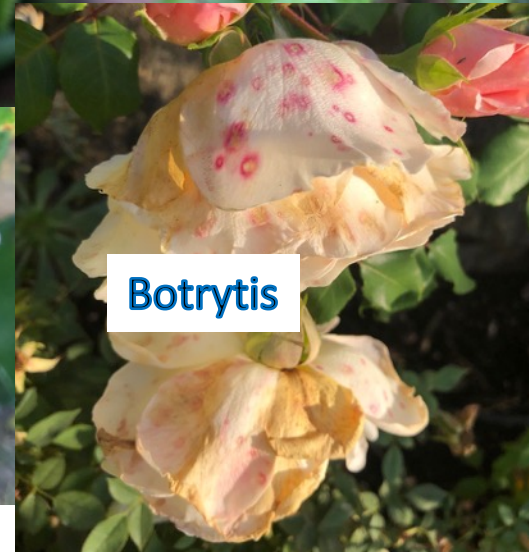
Blackspot
Fungal Disease
Worst in wet weather



Rose Rust
Fungal Disease
Moist Conditions
rusty early, black later



Powdery
Mildew



Botrytis

- Moist or cool, wet conditions
- Blackspot, Rust, Botrytis
- Neem
- Warm Days Cool Nights, Humidity
- Powdery Mildew
- Try BiCarb Old Fashioned Fungicide
- Overhead water not the cause of mildew

Managing Disease/ Pests

- If you don't wish to spray for fungal disease, try pruning for more air and light and increase ground to foliage height
- Dormant spray (e.g., oil/copper) reduces diseases/ pests over the year
- Insects are smothered by oils and Neem oil has other actions
- Black spot is often worst in wet weather -remove infected leaves
- If you spray, use less toxic sprays – these are OMRI listed “organics”



Example OMRI Sprays (Organic Materials Research Institute)

Dentist office >



Organic Sprays

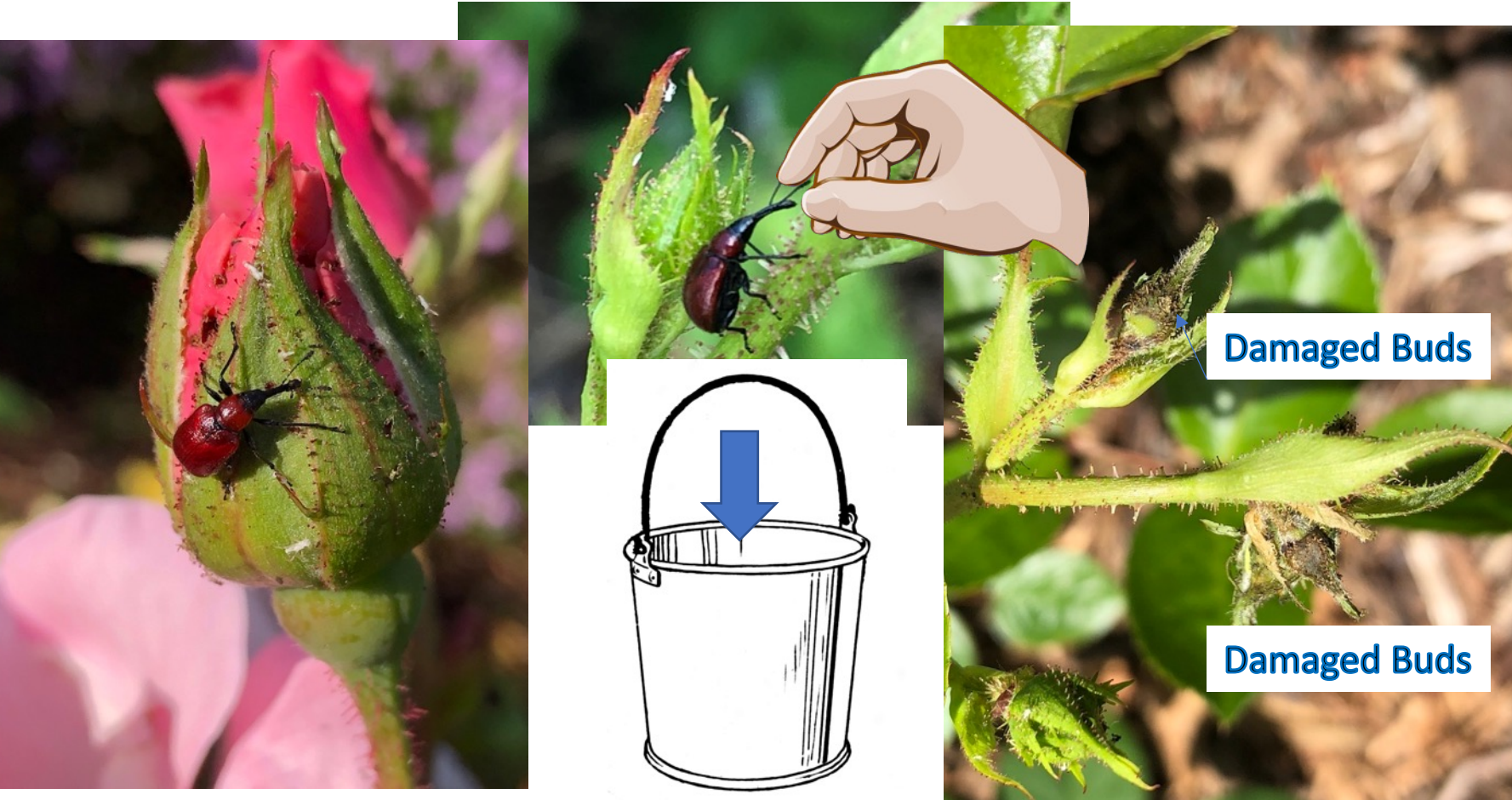
- **READ and FOLLOW the label!**
Protect yourself and wash up afterwards
- Spray early on a day that is dry, not windy and will be dry for 24 hours. Before bees appear.
- Spray oils and soaps on a day not exceeding 80 degrees to avoid spray burn
- Spray underside of leaves as well as tops
- Spray ground around the plant

Example OMRI
Sprays (Organic
Materials Research
Institute)



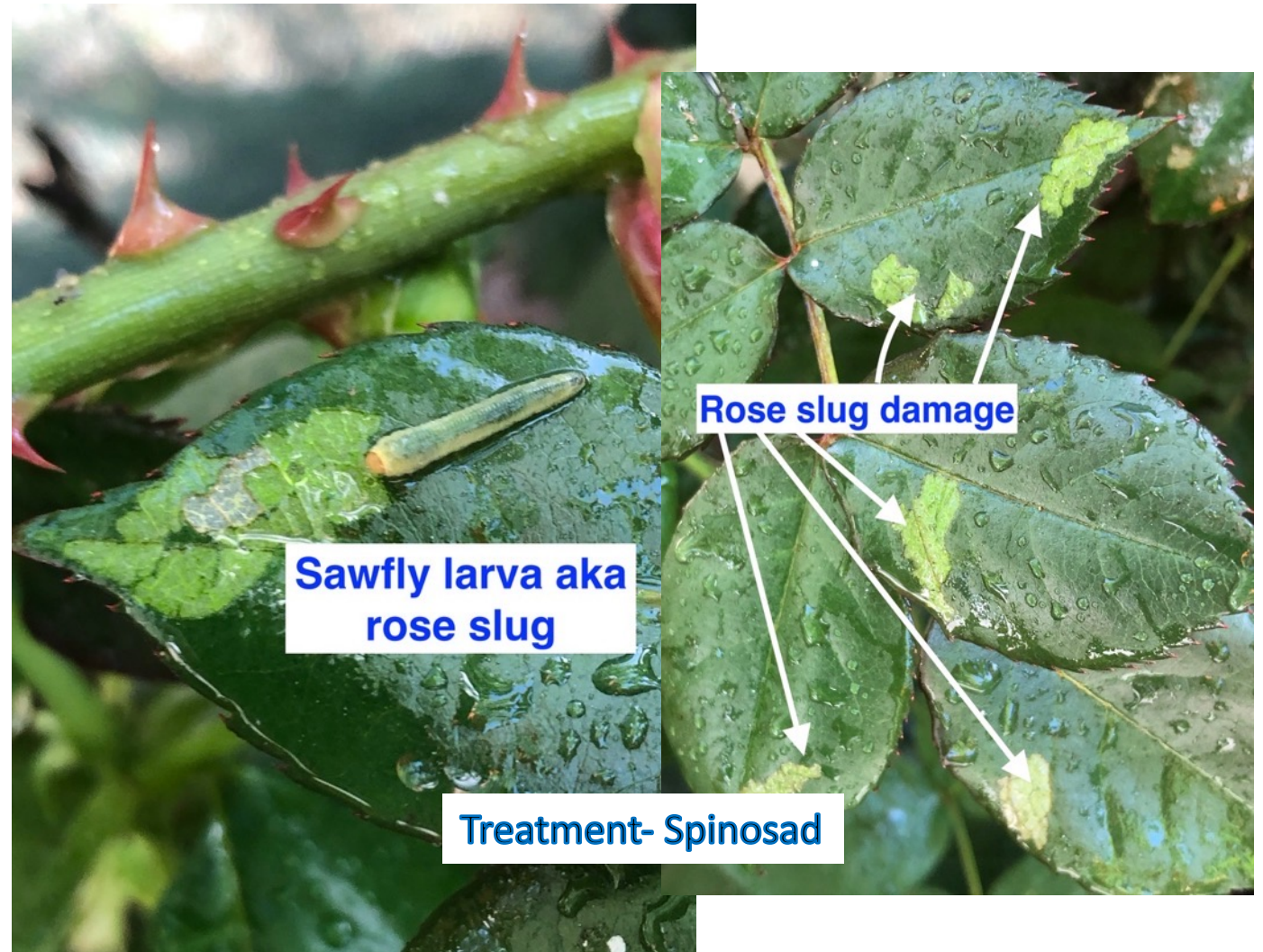
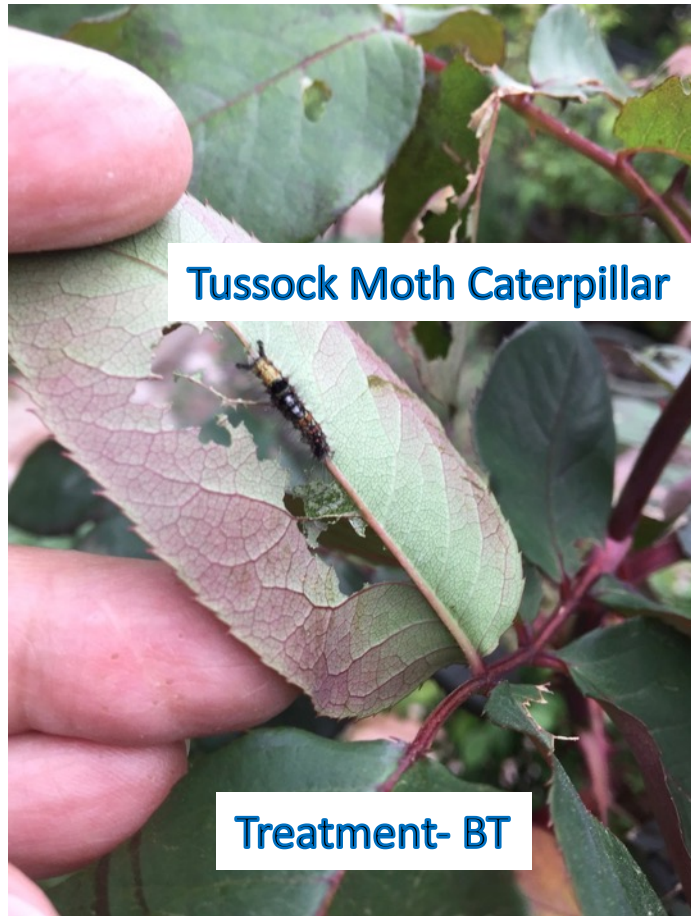
Evil Weevil

Rose Curculio weevil



- Shake off into bucket of Soapy Water
- Hand pick and destroy all damaged buds and flowers
- If severe, use Spinosad (derived from soil bacteria)
- or insecticide

Chewing Insects



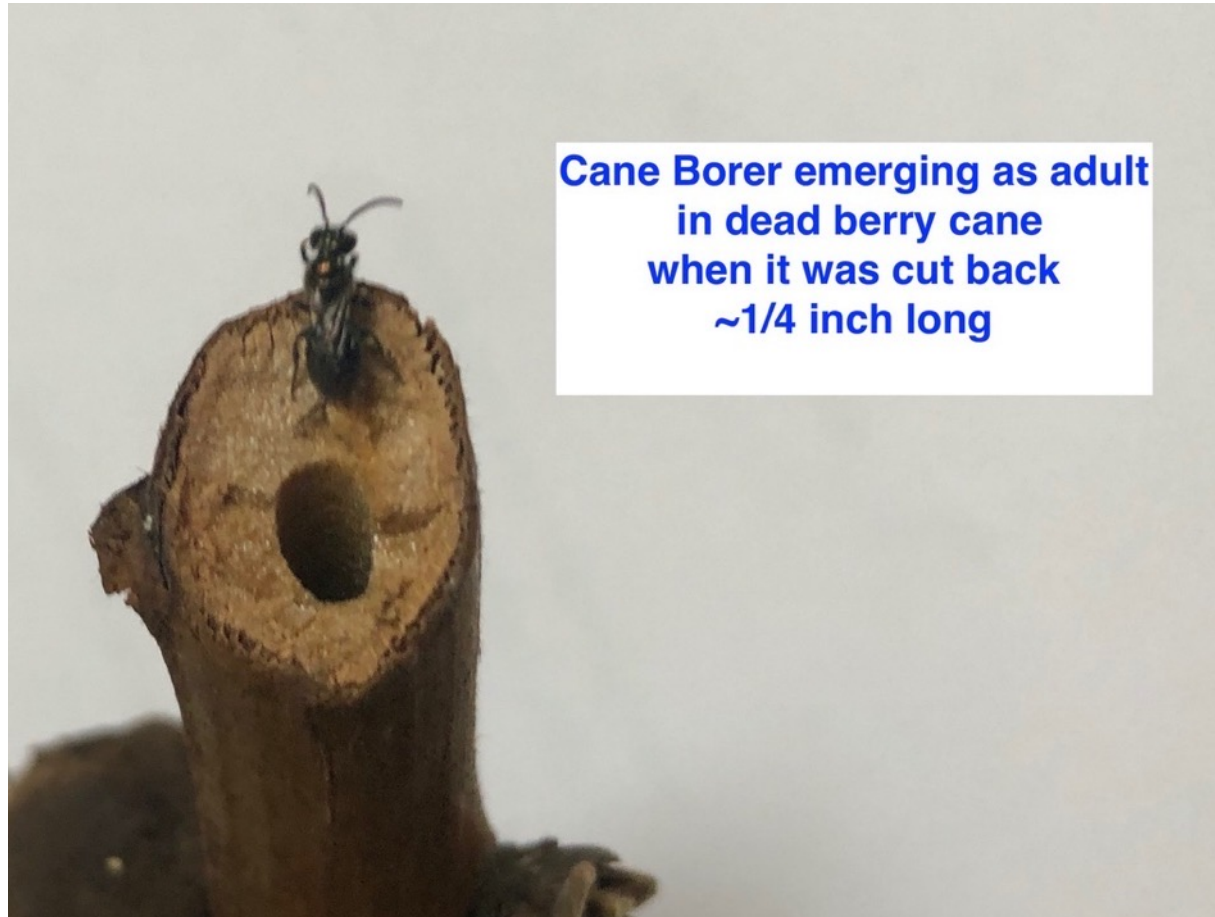
Oak Root Fungus

Armillaria Mellea



- Present in CA and widespread
- Mycelium is yellow white and fan shaped under bark or cambium
- If roses are infected, they die in 1-2 years
- Fungus spreads from infected roots touching
- Not just Oaks get it, many woody plants have it
- Remove all roots, keep Dry conditions, hard to prevent if established
- Can be spread by bits of root on dirty shovels (I did this)
- Mushroom is edible but not the way to grow food!

Holes in cut end of larger canes?
Usually not serious on roses in our area



Old School remedy- seal
the end of large
cuts with school/ white glue

No longer needed in our area
Based on type of pest locally

Does not girdle roses or kill them

For more information

- Peninsularosesociety.org
- On this slide set studalton@gmail.com